

Innovative bathroom solutions



ONYX

MADE IN FRANCE

Sector :
STUDENT ACCOMMODATIONS

Why choose a BAUDET bathroom ?

- Single point of contact
- Controlled costs and reduced build time
- Optimisation of surfaces
- Speed of installation
- Perfect sealing
- Optimum hygiene
- Aftercare / Snagging
- Dedicated after sales support

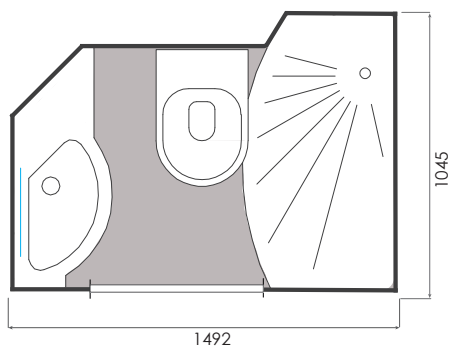


* Non-contractual photos

Ideal for small spaces

Dimensions

Length = 1 492 mm Surface int. = 1,10 m²
 Width = 1 045 mm Weight = 150 kg
 Height = 2 260 mm Door of 600 mm



The Onyx model is the ideal solution for new build or renovation projects.

Our Accreditations



Technical advice
CSTB n° 9/15-1019



NFC-15 100

Discover our range at www.baudet-sa.com



BAUDET INITIAL

ONYX

MADE IN FRANCE 

Features

DOOR

- Door frame lacquered white (RAL9010)
- Lacquered hinge door (width of 600 mm)
- Lever door lock
- 1 robe hook

BASIN

- Concrete resin basin with a gel coat finish
- Towel hanging cut into the front of the basin
- Mixer tap
- Waste
- Mirror
- Plug

SHOWER

- Bar valve incorporating flexible hose, head and soap dish
- Shower mixer
- Shower curtain mounted on aluminium rail
- Storage shelf

WC

- WC wall hung
- Double seat thermoset (white)
- 1 toilet roll holder
- Cistern dual flush 3/6 L
- White flush panel

Structure

- GRP structure
- Pod finish : gloss appearance
- Free standing GRP floor, non-slip finish, reinforced by a metal frame (16 cm step).
- Integrated shower tray
- Seal between the walls provided by a compressed foam seal

Connections

ELECTRICITY

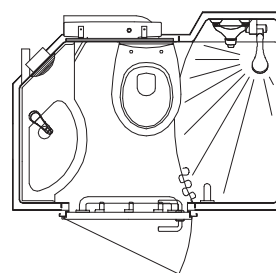
- IP65 2 LED spot lights
- Earthing: cable section 6 mm²
- VMC self-adjusting 30 m³ /h – Ø 125 mm
- Access via a removable hatch located in the wall

WASTE / SUPPLY

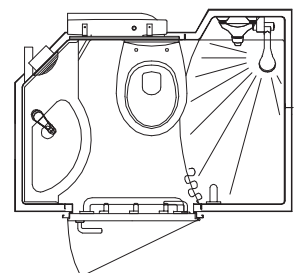
- Hot/ Cold multilayered, pex pipe with crimped connections to 1/2"
- Basin and shower waste PVC Ø40
- WC waste in PVC Ø100
- Access via a removable hatch located in the wall

Handing

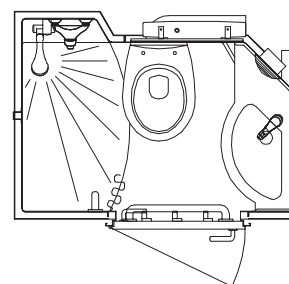
Our bathrooms are adapted to the configuration of your space.



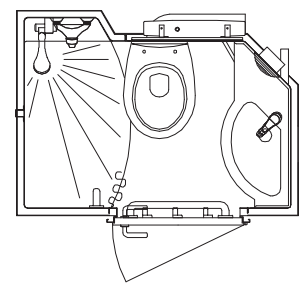
Option 01



Option 02



Option 03



Option 04

Note

The installation of our bathrooms requires services in place prior to delivery, these are not included by Baudet.

- Our bathroom are designed to be cladded with standard plasterboard (BA 13mm)
- Electricity supply on site must provide a cable for lighting and for a light switch
- Plumbing has to be ready for connections including isolation valves.
- The floor surface to receive the pod has to be prepared according BAUDET's recommandations, also the recess, drilling and refilling of the floor.

*This document is not contractual. It is produced for general information only.

Tel. +33(0)2 51 66 27 85
Fax +33(0)2 51 66 27 63
contact@baudet-sa.com

Discover our range at www.baudet-sa.com